



780 Professional Dr. North, Shreveport, Louisiana 71105  
Phone 318.524.2270 Fax 318.524.2297

HLK300-00

#### **Read before Installation**

This product is designed for use on ATVs and/or RUVs to increase ground clearance and fender clearance. It is designed for utility type, slow-speed use on relatively flat terrain in deep mud or snow. Although we have many thousands of satisfied lift kit customers and over 1,800 franchised dealers selling and installing lift kits, purchasers should be aware that use of this product may increase the frequency of required maintenance, part wear, and will raise the center of gravity on your ATV and/or RUV, increasing risk of roll-over, injury and death on all types of terrain. It is your responsibility to always inform other operators and passengers of this vehicle about the added risks.

We recommend that wider tires and/or wheel spacers be used to achieve a wider stance and to improve stability of the ATV and/or RUV. Riders should be advised that the handling characteristics of a taller ATV and/or RUV are different and require extra care when riding, particularly on side hills or off-camber situations. If you further raise the center of gravity by adding taller tires, heavy loads to racks or seats, or by any other means, the ATV and/or RUV must be operated with even more care, at slower speeds and on relatively flat ground. All turns should be done at a slow speed, even on level ground.

Operation of an ATV and/or RUV with or without a lift kit, while or shortly after consuming alcohol or drugs, subjects the rider to the risk of serious bodily harm or possible death. This risk is compounded if the rider does not wear an approved helmet and other safety gear. High Lifter urges that all approved safety gear be worn when riding an ATV and/or RUV as a driver or passenger.

#### **Dealers and other Installers**

You are responsible for informing your customer and end user of the information contained above and the increased potential hazards of operating an ATV and/or RUV equipped with a lift kit. If you install the lift kit, it is your responsibility to also install the warning label prominently in view of the driver and in prominent view of the driver and passenger on RUVs and multi-passenger ATVs. They should also be instructed to notify anyone operating the vehicle, as well as any passengers, that a lift kit is installed.

As discussed above, it is critically important that they be instructed in the need for slower speed operation, regardless of terrain, after this lift kit is installed.

This lift kit contains the following parts:

10x55mm Bolts	6
10mm Nuts	6
Lift Brackets	4
Spacers	4
Pages of Diagrams	4
Pages of Instructions	2

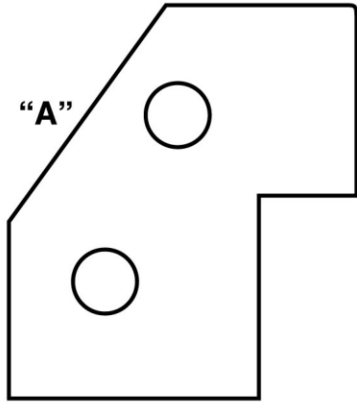
## **Front Lift**

- 1) Place jack under center of ATV front end and lift until front wheels clear the ground. Be careful to support ATV properly so that it is securely supported but so that A-arms and shocks can droop to full extension.
- 2) Remove front wheels and shocks.
- 3) Slide bottom of lift bracket (“A” on left and “B” on right) over A-arm shock mount and insert new 10x55mm bolt. Place one spacer “F” between the shock mount and bracket.
- 4) Slide bottom of shock into top of lift bracket. Insert a new 10x55mm bolt through top bracket hole and shock.
- 5) Install top of shock in original location, then install all nuts.
- 6) Repeat the procedure for the other side.
- 7) The brackets should angle inward towards the shock keeping the original shock angle when lift is installed correctly or serious tire damage can occur. (It is OK for the shock to lean in slightly but it should not lean out)
- 8) Tighten all bolts to manufacturer’s torque specifications.
- 9) Install the wheels, torque wheel lug nuts to manufacturer’s specifications, lower and remove jack. Check for clearance problems or misalignment.

## **Rear Lift**

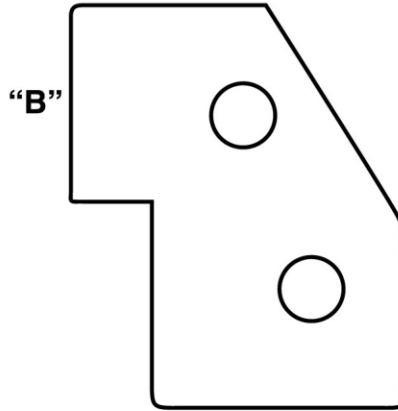
- 1) Place jack under ATV at the rear of the bottom skid plate and lift until the weight is off of the suspension. Be careful to secure the ATV properly so as not to fall off the jack.
- 1) Remove the shock.
- 2) After removing the shock, jack the ATV up 1”-2” further.
- 3) Slide the bottom of lift bracket “C” over the shock mount (the end with the large single notch goes on the bottom and faces the rear of the ATV).
- 4) Install one of the new bolts through the lift bracket, spacer “D” and lower shock mount.
- 5) Slide the bottom of the shock into the top of the lift bracket and insert one of the new bolts through the top of bracket “C” and then spacer “F” will go between the bottom of the strut and the inside of bracket “C”.
- 6) Install lift bracket “E” on the top lift bracket bolt and brake housing.
- 7) Tighten all bolts to manufacturer’s torque specifications.
- 8) Install the wheels, torque wheel lug nuts to manufacturer’s specifications, lower and remove jack. Check for clearance problems or misalignment.

# PARTS LIST



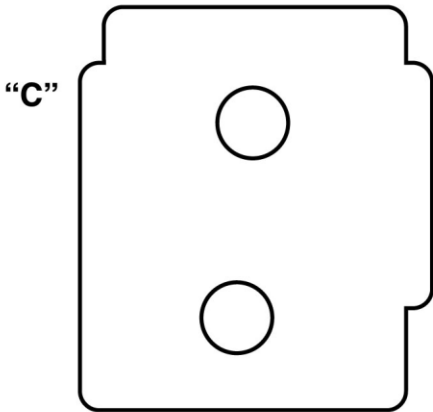
“A”

QUANTITY - 1



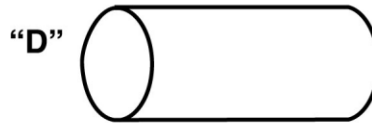
“B”

QUANTITY - 1



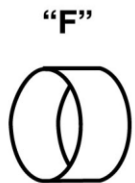
“C”

QUANTITY - 1



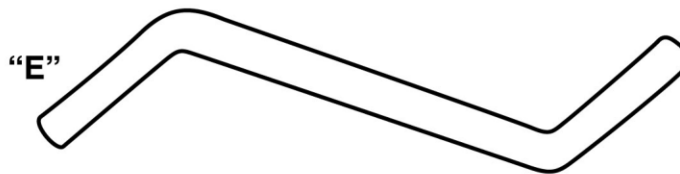
“D”

QUANTITY - 1



“F”

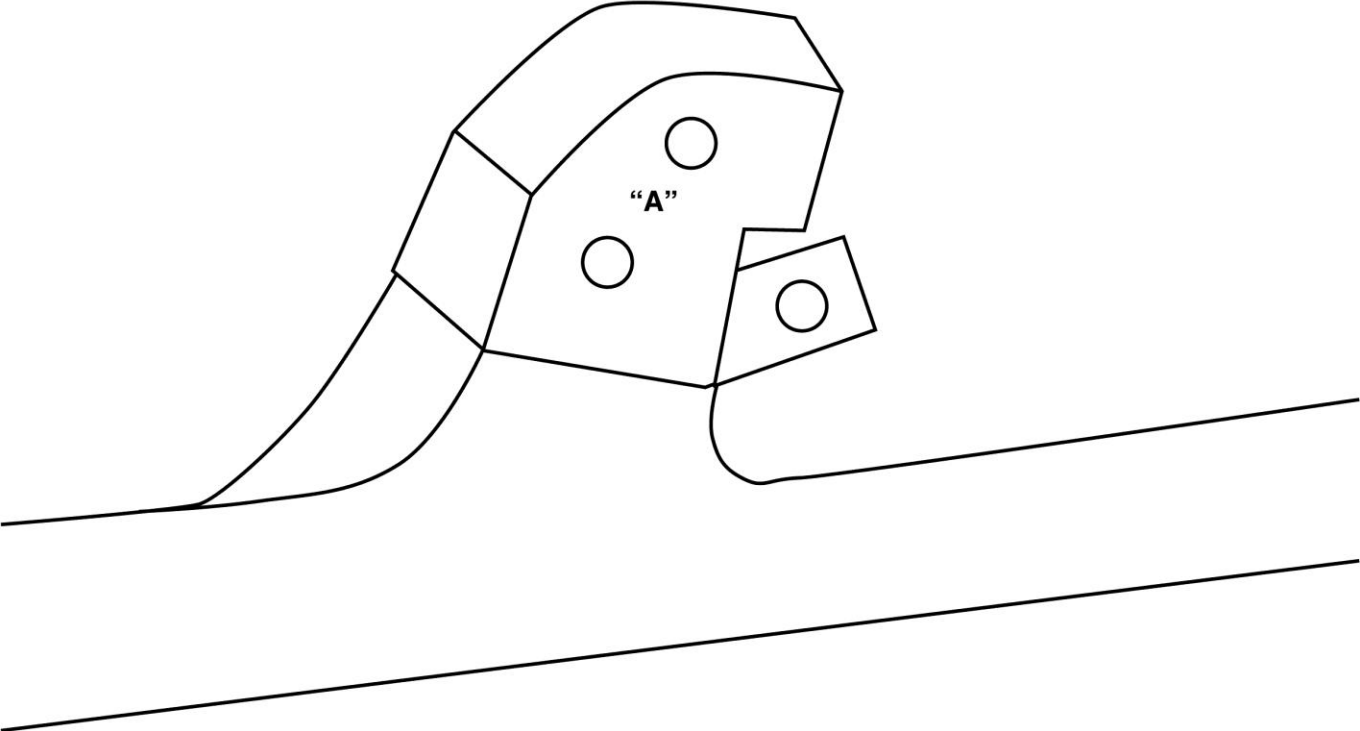
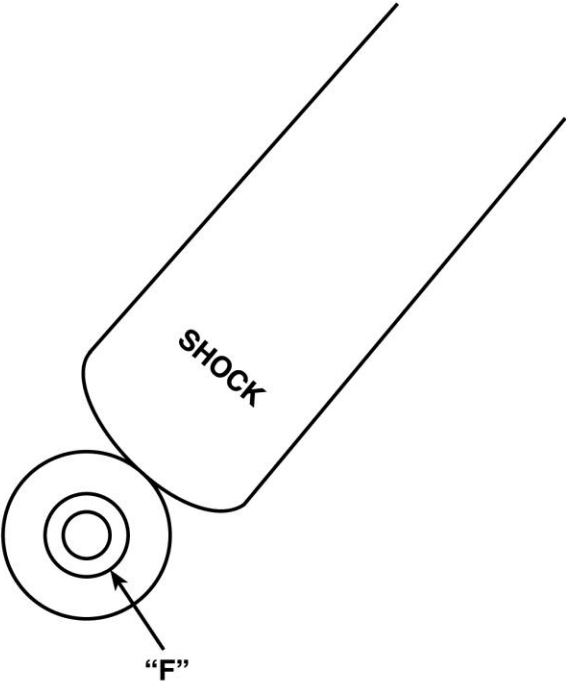
QUANTITY - 3



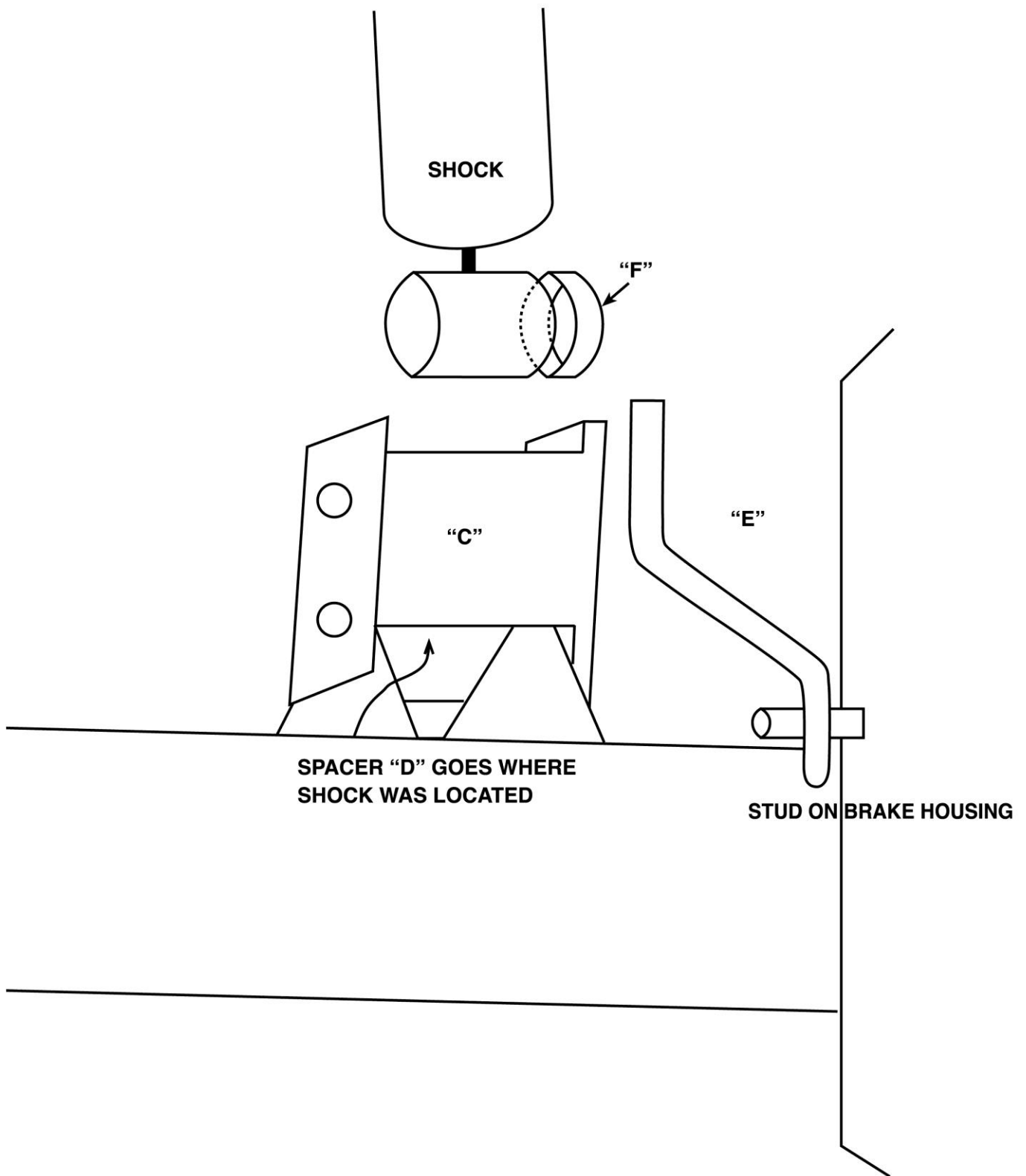
“E”

QUANTITY - 1

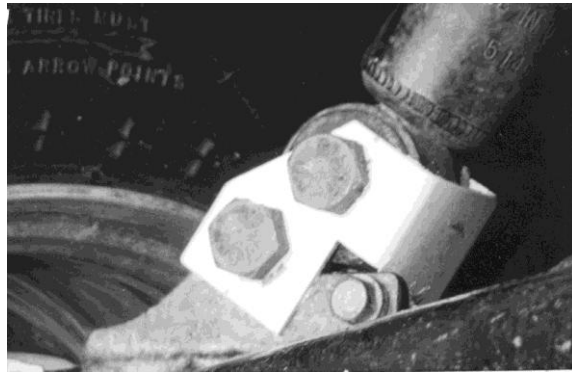
**RIGHT SIDE IS MIRROR IMAGE  
USING PART "B"**



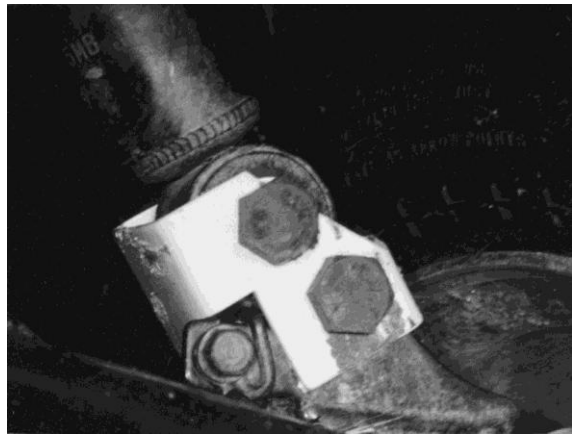
# REAR



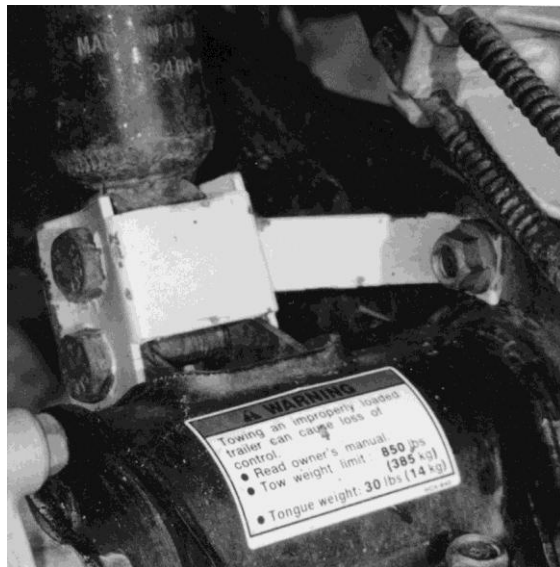
(Front) Right Lift Installed



(Front) Left Lift Installed



Rear Lift Installed





### **High Lifter Lifetime Warranty**

From the beginning, High Lifter has engineered and manufactured some of the toughest, most durable products on the market. That's why this product comes with a Lifetime Warranty. It's our promise that High Lifter will never let you down.

- The **Lifetime Warranty** covers products sold to the original purchaser only and is not transferable. The term of the warranty is for the lifetime of the vehicle in question.
- Normal wear and tear items and finishes, such as, but not limited to: Heim joints, tie rod ends, ball joints, bearings, seals, bushings, bushing sleeves, zinc plating , powder coating, or chipping and discoloration of any finish is not covered.
- High Lifter will ship the replacement product after the returned product has been inspected by High Lifter staff.
- The warranty shall not include claims for damages, installation time or labor charges, economic losses, inconvenience, transportation, towing, down time, direct or indirect or consequential damages or delay resulting from any defect.
- The warranty does not apply to products that have been improperly applied or improperly installed.

### **Making a warranty claim**

1. All claims must be accompanied by the part and the original sales receipt or other acceptable proof of purchase from the original owner.
2. All warranties must be accompanied with a Return Merchandise Authorization (RMA) number. (Contact High Lifter at 318-524-2270 or 800-699-0947 for an RMA number)
3. When shipping the damaged product:
  - a. Write the RMA number on the outside of the box.
  - b. Also include the RMA number, proof of purchase and any notes inside the box.
  - c. Please keep your tracking number and shipment information.
4. The customer is responsible for shipping the product to High Lifter--return shipping within the lower 48 states will be paid by High Lifter products. With all warranty claims, only standard shipping services apply.
5. High Lifter will process your order within 24 business hours of receiving the returned item.
6. **Ship to:** High Lifter Products, 780 Professional Drive North, Shreveport, Louisiana 71105