



780 Professional Drive N. Shreveport, LA 71105 Phone (318)-524-2270 Fax (318)-524-2297  
www.highlifter.com

## Suzuki 500 (98+) Lift Kit Installation Instructions

### Read before Installation

This product is designed for use on ATVs and/or RUVs to increase ground clearance and fender clearance. Purchasers should be aware that use of this product may increase the frequency of required maintenance, part wear, and will raise the center of gravity on your ATV and/or RUV, increasing risk of roll-over, injury and death on all types of terrain. It is your responsibility to always inform other operators and passengers of this vehicle about the added risks.

High Lifter Products, products are designed to best fit users ATV/RUV under stock conditions. Adding, modifying, or fabricating any OEM or aftermarket parts will void warranty. High Lifter Products, products could interfere with other aftermarket accessories. If the user has aftermarket products on machine, contact High Lifter Products to verify that they will work together. Adding aftermarket suspension components and/or more aggressive tires can cause breakage of other OEM driveline components such as differentials, axles or drive shafts.

We recommend that wider tires and/or wheel spacers be used to achieve a wider stance and to improve stability of the ATV and/or RUV. Riders should be advised that the handling characteristics of a taller ATV and/or RUV are different and require extra care when riding, particularly on side hills or off-camber situations. If you further raise the center of gravity by adding taller tires, heavy loads to racks or seats, or by any other means, the ATV and/or RUV must be operated with even more care, at slower speeds and on relatively flat ground. All turns should be done at a slow speed, even on level ground.

Operation of an ATV and/or RUV with or without modified suspension components, while or shortly after consuming alcohol or drugs, subjects the rider to the risk of serious bodily harm or possible death. This risk is compounded if the rider does not wear an approved helmet and other safety gear. High Lifter urges that all approved safety gear be worn when riding an ATV and/or RUV as a driver or passenger.

By purchasing and installing High Lifter Products, products, user agrees that should damages occur, High Lifter Products will not be held responsible for loss of time, use, labor fees, replacement parts, or freight charges. High Lifter Products will not be held responsible for any direct, indirect, incidental, special, or consequential damages that result from any product purchased from High Lifter Products. The total liability of seller to user for all damages, losses, and causes of action, shall not exceed the total purchase price paid for the product that gives rise to the claim.

### Dealers and other Installers

You are responsible for informing your customer and end user of the information contained above and the increased potential hazards of operating an ATV and/or RUV equipped with modified suspension components. If you install any suspension modifying components, it is your responsibility to also install the warning label prominently in view of the driver and in prominent view of the driver and passenger on RUVs and multi-passenger ATVs. They should also be instructed to notify anyone operating the vehicle, as well as any passengers, that said vehicle is modified.

As discussed above, it is critically important that they be instructed in the need for slower speed operation, regardless of terrain, after this lift kit is installed.

### **This lift kit contains the following parts:**

3/8 x 2 1/4 Bolts	8
3/8 Nuts	8
10mm Flat Washers	16
Lift Brackets	4
Spacers	8

**Note:** Washers are not required during the installation, but are provided for your use at either one or both ends of the bolt.

## Front Lift

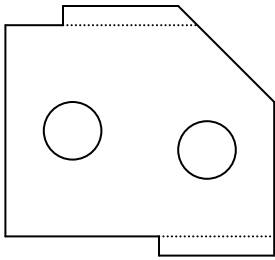
- 1) Place jack under center of ATV front end and lift until front wheels clear the ground. Be careful to support ATV properly so that it is secure, but so that the A-arms and shocks can droop to full extension.
- 2) Remove front wheels and shock.
- 3) Slide bottom of lift bracket "A" over top of the shock then insert spacer "C" on the inside/front of bracket "A" and top of shock. Insert one of the new 3/8 x 2 1/4 bolts through the bottom hole of bracket "A" and through spacer "C." Use a 3/8" nylon lock nut provided to secure the bolt.
- 4) Put the top of lift bracket "A" onto the top shock mount along with spacer "D". Insert one of the new 3/8 x 2 1/4 bolts. Use a 3/8" nylon lock nut provided to secure the bolt.
- 5) Re-insert the bottom of the shock onto the A-arm with the original OEM nut and bolt.
- 6) Tighten all nuts and bolts to manufacturers torque specifications.
- 7) Repeat this process on the opposite front shock.
- 8) Lower ATV, "Load" suspension, check for clearance or alignment problems.

## Rear Lift

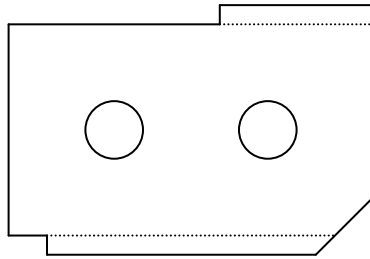
- 1) Place jack directly under center of ATV just in front of where drive shaft is connected to the engine. Be careful to support the ATV properly so that it is secure, but so that the rear axle can droop about 2" when rear shocks are removed.
- 2) Remove the rear wheels and shocks.
- 3) Slide the bottom of bracket "B" over the top of the shock. **Note:** Bracket "B" bottom is indicated by the end with a slight angle on the corner. Place (1) spacer "C" between the inside of bracket "B" and the end of the shock to take up space inside the bracket. Secure bracket "B" and spacer "C" with the new 3/8 x 2 1/4 bolts provided. Use a 3/8" nylon lock nut provided to secure the bolt.
- 4) Place the top of bracket "B" while installed on the shock to the bottom of the shock mount. Place spacer "D" between the shock mount where the top of the shock mount was originally placed to prevent the shock mount from collapsing when nut is tightened. Secure the top of bracket "B" and bracket "D" with a new 3/8 x 2 1/4 bolt. Use a 3/8" nylon lock nut provided to secure the bolt.
- 5) Reinstall the bottom of the OEM shock to the OEM shock mount.
- 6) Tighten all nuts and bolts to manufacturers torque specifications.
- 7) Repeat this process on the opposite rear shock.
- 8) Lower ATV, "Load" suspension, check for clearance or alignment problems.

## Part Lists

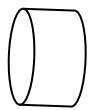
Bracket A (Qty 2)



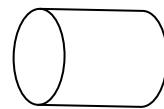
Bracket B (Qty 2)



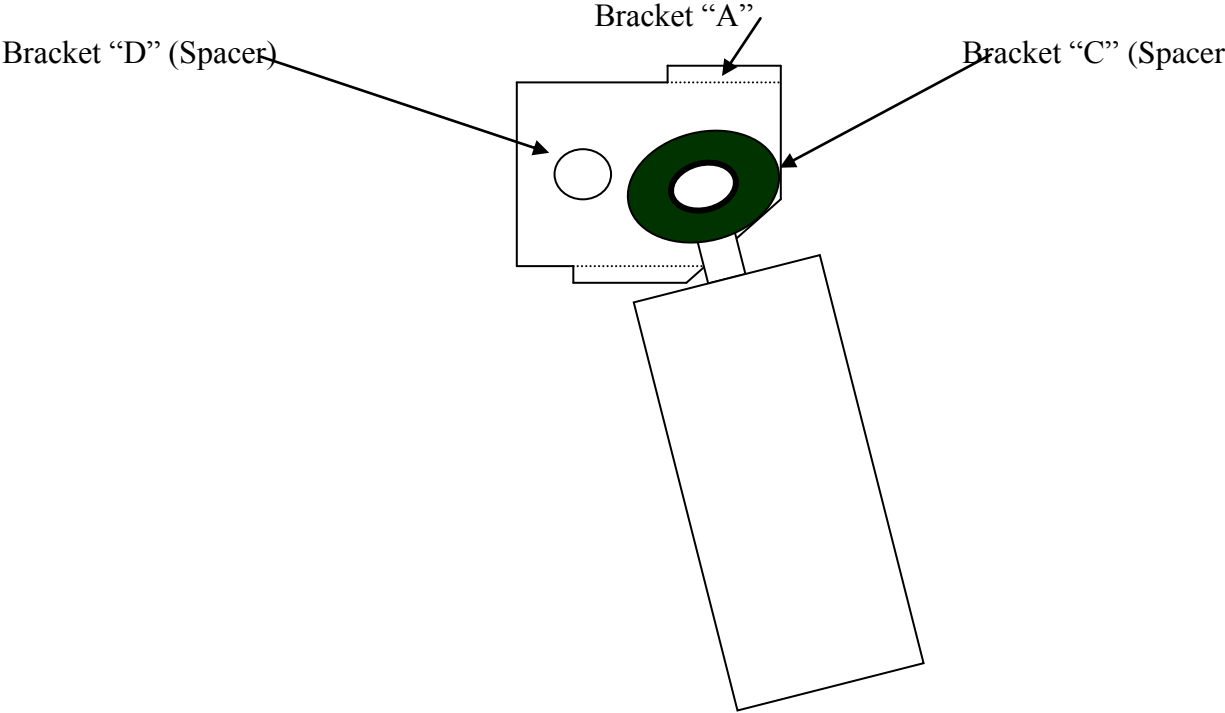
Spacer C (Qty 4)



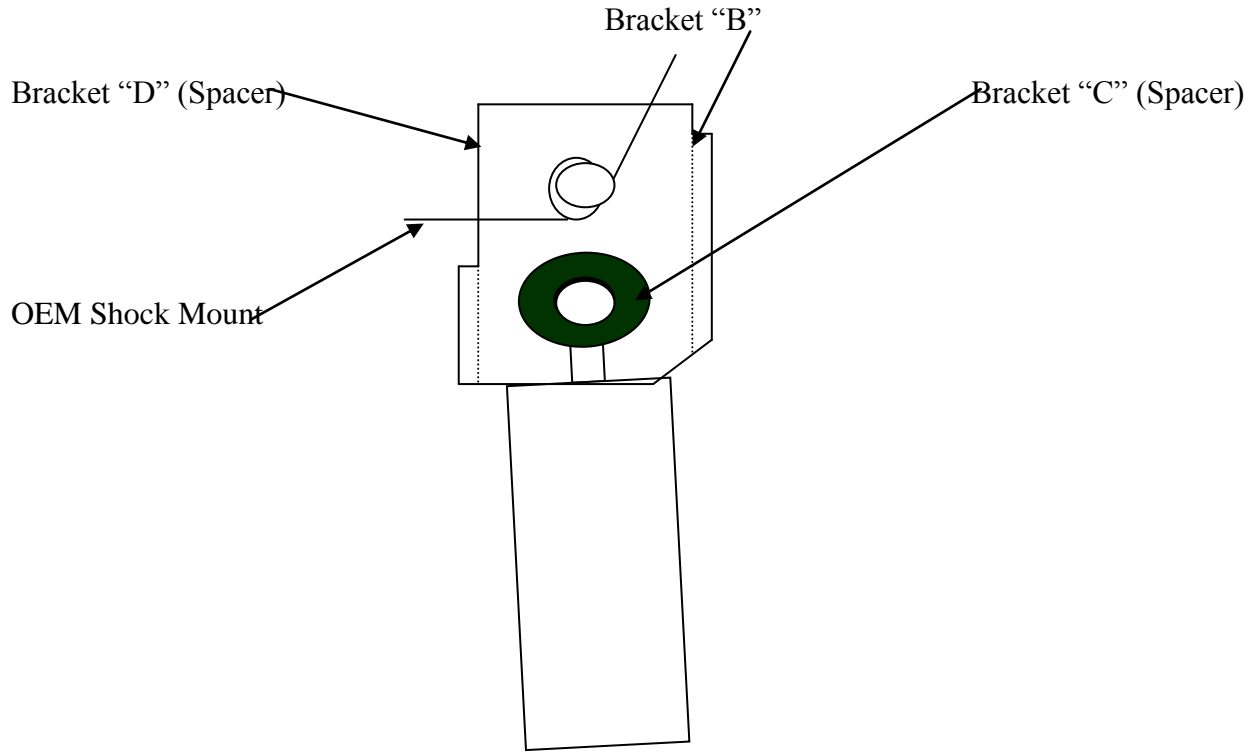
Spacer D (Qty 4)



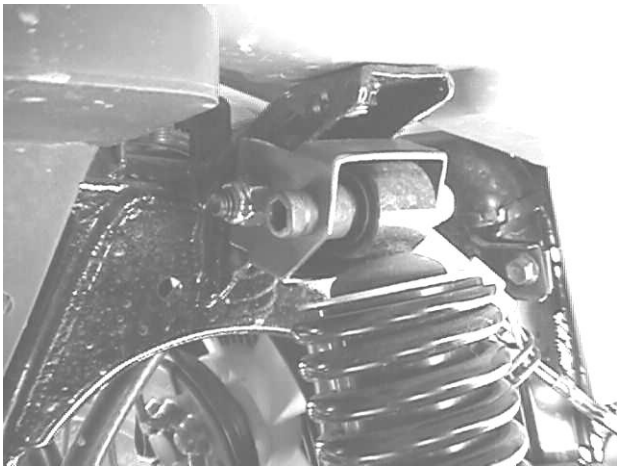
**Front Installation Diagram**



## Rear Installation Diagram



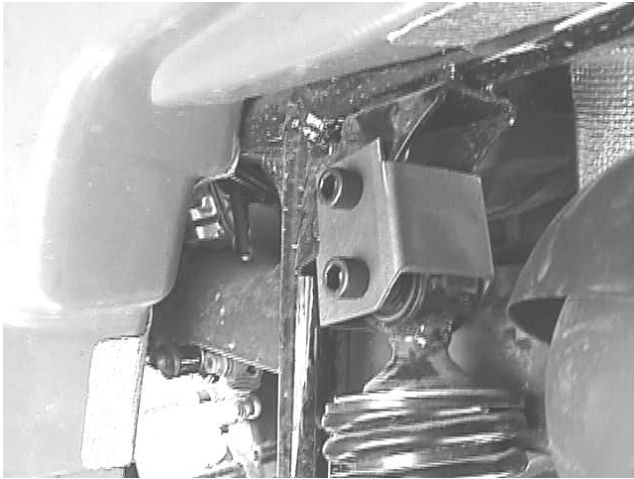
Left Front Lift Kit Installed (FRONT ANGLE VIEW)



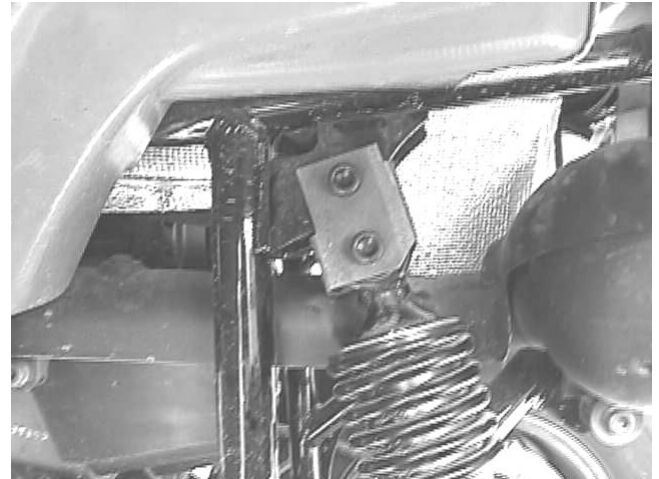
Left Front Lift Kit Installed (REAR ANGLE VIEW)



Left Lift Kit Installed (REAR ANGLE VIEW)



Left Rear Lift Kit Installed (SIDE VIEW)



### Suzuki 500 Lift Kit

After the front and rear lifts are installed a final step is required to prevent vibration and unnecessary driveline wear.

The angle of the rear drive shaft has been changed slightly so that the two halves of the yoke holding the u-joint, immediately behind the engine, touch as the drive shaft rotates. This may be observed by lowering the ATV off the jack, slowly pushing it forward and backward and watching for a bump when the yokes make contact.

See picture

The remedy for this is to take a die grinder with a carbide tip or a Dremel Tool and remove just enough metal from the front yoke when they touch, at the points indicated by the arrow, to keep the yokes from touching when they rotate. The amount to be removed is about 1/4" and will not significantly affect strength. This process can be done without removing the drive shaft, unless you use a rotary hand grinder in which case it is necessary to disconnect the drive shaft from the yoke.

When you are finished be sure to blow all shavings away and paint the spots you ground so they don't rust.

With the right tool (Die Grinder with carbide bit) the process takes about 15-20 minutes.

**Thank You**

**For choosing**







### **High Lifter Lifetime Warranty**

From the beginning, High Lifter has engineered and manufactured some of the toughest, most durable products on the market. That's why this product comes with a Lifetime Warranty. It's our promise that High Lifter will never let you down.

- The **Lifetime Warranty** covers products sold to the original purchaser only and is not transferable. The term of the warranty is for the lifetime of the vehicle in question.
- Normal wear and tear items and finishes, such as, but not limited to: Heim joints, tie rod ends, ball joints, bearings, seals, bushings, bushing sleeves, zinc plating , powder coating, or chipping and discoloration of any finish is not covered.
- High Lifter will ship the replacement product after the returned product has been inspected by High Lifter staff.
- The warranty shall not include claims for damages, installation time or labor charges, economic losses, inconvenience, transportation, towing, down time, direct or indirect or consequential damages or delay resulting from any defect.
- The warranty does not apply to products that have been improperly applied or improperly installed.

### **Making a warranty claim**

1. All claims must be accompanied by the part and the original sales receipt or other acceptable proof of purchase from the original owner.
2. All warranties must be accompanied with a Return Merchandise Authorization (RMA) number. (Contact High Lifter at 318-524-2270 or 800-699-0947 for an RMA number)
3. When shipping the damaged product:
  - a. Write the RMA number on the outside of the box.
  - b. Also include the RMA number, proof of purchase and any notes inside the box.
  - c. Please keep your tracking number and shipment information.
4. The customer is responsible for shipping the product to High Lifter--return shipping within the lower 48 states will be paid by High Lifter products. With all warranty claims, only standard shipping services apply.
5. High Lifter will process your order within 24 business hours of receiving the returned item.
6. **Ship to:** High Lifter Products, 780 Professional Drive North, Shreveport, Louisiana 71105