

High Lifter Products, Inc.
780 N Professional Drive
Shreveport, LA 71105



318-524-2270
318-524-2297

Suzuki 700 Lift Kit Lift Kit Installation Instructions

Read Before Installation

This product is designed for use on ATVs and/or RUVs to increase ground clearance and fender clearance. It is designed for utility type, slow-speed use on relatively flat terrain in deep mud or snow. Although we have many thousands of satisfied lift kit customers and over 1,800 franchised dealers selling and installing lift kits, purchasers should be aware that use of this product may increase the frequency of required maintenance, part wear, and will raise the center of gravity on your ATV and/or RUV, increasing risk of roll-over, injury and death on all types of terrain. It is your responsibility to always inform other operators and passengers of this vehicle about the added risks.

We recommend that wider tires and/or wheel spacers be used to achieve a wider stance and to improve stability of the ATV and/or RUV. Riders should be advised that the handling characteristics of a taller ATV and/or RUV are different and require extra care when riding, particularly on side hills or off-camber situations. If you further raise the center of gravity by adding taller tires, heavy loads to racks or seats, or by any other means, the ATV and/or RUV must be operated with even more care, at slower speeds and on relatively flat ground. All turns should be done at a slow speed, even on level ground.

Operation of an ATV and/or RUV with or without a lift kit, while or shortly after consuming alcohol or drugs, subjects the rider to the risk of serious bodily harm or possible death. This risk is compounded if the rider does not wear an approved helmet and other safety gear. High Lifter urges that all approved safety gear be worn when riding an ATV and/or RUV as a driver or passenger.

If this product is not what you expected, or is not consistent with your intended use, you should return the product immediately to the seller, before installation, for a refund of the purchase price; less any fees. After installation, product is warranted for 90 days for defects in workmanship and materials. Warranty is limited to refund of the purchase price or replacement of the kit, at the seller's option.

Dealers and other Installers

You are responsible for informing your customer and end user of the information contained above and the increased potential hazards of operating an ATV and/or RUV equipped with a lift kit. If you install the lift kit, it is your responsibility to also install the warning label prominently in view of the driver and in prominent view of the driver and passenger on RUVs and multi-passenger ATVs. They should also be instructed to notify anyone operating the vehicle, as well as any passengers, that a lift kit is installed.

As discussed above, it is critically important that they be instructed in the need for slower speed operation, regardless of terrain, after this lift kit is installed.

NOTE: If you are using factory wheels with a lift kit you will need to have 1" wheel spacers for clearance. Always check for potential problems anytime you go out of factory specifications.

Parts Diagram

**Front Tube Bracket
(2ea)**



**10mm x 55mm Hex Bolt
(8ea)**



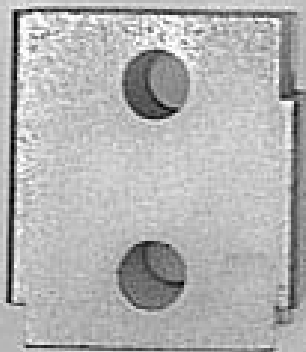
**10mm Lock Nut
(8ea)**



**10mm Flat Washer
(16ea)**



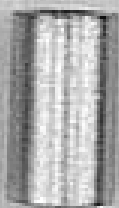
**Rear Tube Bracket
(2ea)**



Small Spacer (4ea)



Large Spacer (4ea)

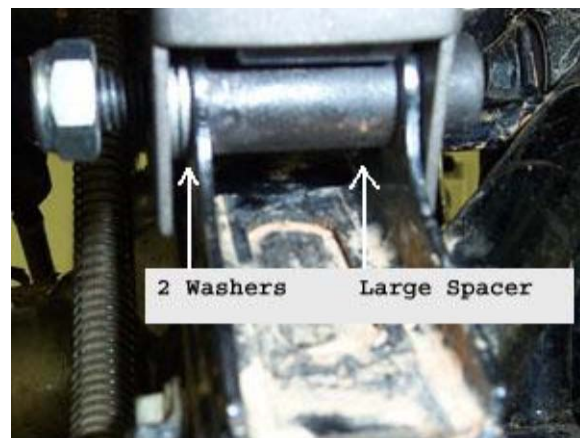
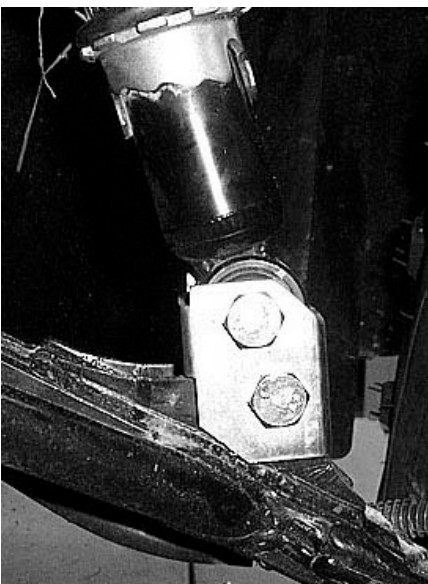


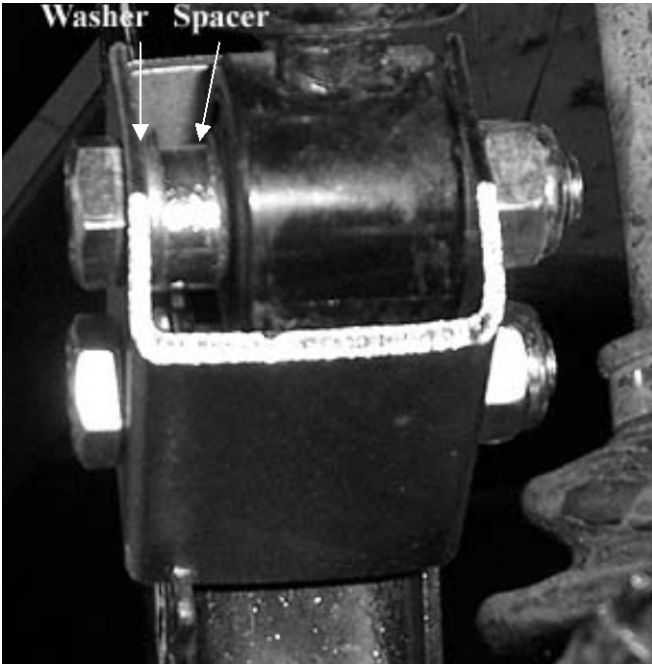
Front Lift Installation Instructions

****Note**** Sides of the ATV are described as if sitting on the ATV.

1. Place jack under center of the ATV front end and lift until front wheels clear the ground. Be careful to support ATV properly so that it's secure, but so that the A-arms and shocks can droop to full extension.
2. Remove front wheels and shocks.
3. Place Front Tube Bracket onto the lower shock mount. Make sure that the angle side is facing to the inside of the ATV.
4. Put large spacer into the shock mount.
5. Now insert the 10x55mm bolt into the brackets, aligning the holes, BUT do not go all the way through. Between the shock mount and the inside of the bracket that is facing the front of the ATV insert two 10mm washers.
6. Push bolt through fasten tight with the 10mm lock nut.
7. Place the bottom of the shock into the top of the Front Tube Bracket. Position the shock, so that it is on the inside of the tube bracket so that is flush against the side of the bracket that is facing the rear.
8. Insert the 10x55mm bolt, starting from the side that is facing the rear. Do not go all the way through. Between the shock and the inside of the tube bracket insert a 10mm washer and small spacer. The washer needs to be between the small spacer and shock.
9. Finish pushing the bolt through and fasten tight with the 10mm lock nut. Reattach the top of the shock to the ATV.
10. Repeat steps for opposite side. **Torque all bolts to factory specifications.** Place wheels on ATV and lower jack.

Front Lift Illustrations



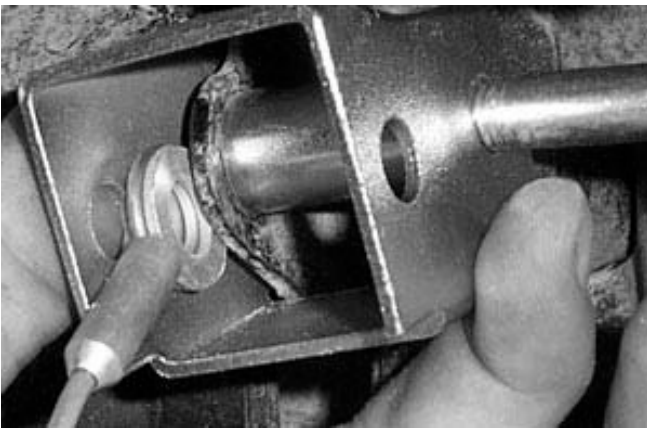
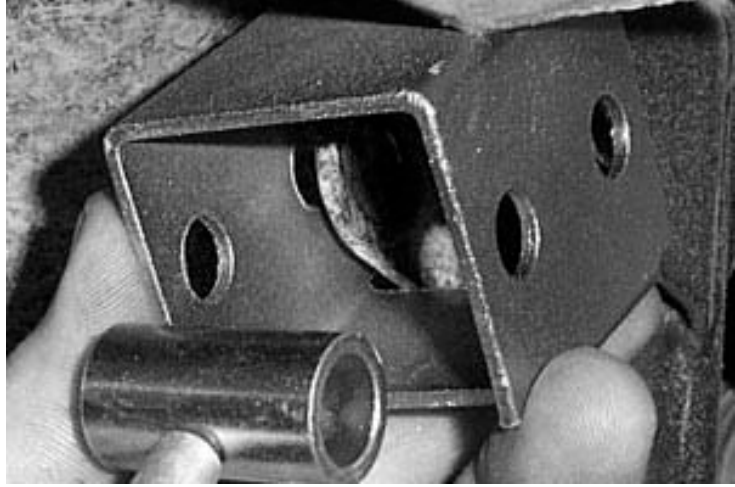


Rear Lift Installation Instructions

****Note**** Sides of the ATV are described as if sitting on the ATV.

1. Place jack under center of the ATV rear end and lift until rear wheels clear the ground. Be careful to support ATV properly so that it's secure, but so that the shocks can droop to full extension.
2. Remove rear wheels and shocks.
3. Place Rear Tube Bracket onto the upper shock mount. Put large spacer into the shock mount.
4. Now insert the 10x55mm bolt into the brackets, aligning the holes, BUT do not go all the way through. Between the shock mount and the inside of the bracket that is facing the front of the ATV insert two 10mm washers.
5. Push bolt through fasten tight with the 10mm lock nut.
6. Place the top of the shock into the bottom of the Rear Tube Bracket. Position the shock, so that it is on the inside of the tube bracket so that it is flush against the side of the bracket that is facing the rear.
7. Insert the 10x55mm bolt, starting from the side that is facing the rear. Do not go all the way through. Between the shock and the inside of the tube bracket insert a 10mm washer and small spacer. The washer needs to be between the small spacer and shock.
8. Finish pushing the bolt through and fasten tight with the 10mm lock nut. Reattach the top of the shock to the ATV.

9. Repeat steps for opposite side. **Torque all bolts to factory specifications.** Place wheels on ATV and lower jack.



Sway Bar Attachment

1. Remove the bottom of the sway bar attachment, “dog bone” from the ATV.
2. Next, insert two of the 10mm washers onto the “dog bone” and reattach it to the sway bar.
3. Repeat steps for opposite side.

