



780 Professional Drive N. Shreveport, LA 71105 Phone (318)-524-2270 Fax (318)-524-2297
www.highlifter.com

HLK350-00 Installation Instructions

Read before Installation

This product is designed for use on ATVs and/or RUVs to increase ground clearance and fender clearance. Purchasers should be aware that use of this product may increase the frequency of required maintenance, part wear, and will raise the center of gravity on your ATV and/or RUV, increasing risk of roll-over, injury and death on all types of terrain. It is your responsibility to always inform other operators and passengers of this vehicle about the added risks.

High Lifter Products, products are designed to best fit users ATV/RUV under stock conditions. Adding, modifying, or fabricating any OEM or aftermarket parts will void warranty. High Lifter Products, products could interfere with other aftermarket accessories. If the user has aftermarket products on machine, contact High Lifter Products to verify that they will work together. Adding aftermarket suspension components and/or more aggressive tires can cause breakage of other OEM driveline components such as differentials, axles or drive shafts.

We recommend that wider tires and/or wheel spacers be used to achieve a wider stance and to improve stability of the ATV and/or RUV. Riders should be advised that the handling characteristics of a taller ATV and/or RUV are different and require extra care when riding, particularly on side hills or off-camber situations. If you further raise the center of gravity by adding taller tires, heavy loads to racks or seats, or by any other means, the ATV and/or RUV must be operated with even more care, at slower speeds and on relatively flat ground. All turns should be done at a slow speed, even on level ground.

Operation of an ATV and/or RUV with or without modified suspension components, while or shortly after consuming alcohol or drugs, subjects the rider to the risk of serious bodily harm or possible death. This risk is compounded if the rider does not wear an approved helmet and other safety gear. High Lifter urges that all approved safety gear be worn when riding an ATV and/or RUV as a driver or passenger.

By purchasing and installing High Lifter Products, products, user agrees that should damages occur, High Lifter Products will not be held responsible for loss of time, use, labor fees, replacement parts, or freight charges. High Lifter Products will not be held responsible for any direct, indirect, incidental, special, or consequential damages that result from any product purchased from High Lifter Products. The total liability of seller to user for all damages, losses, and causes of action, shall not exceed the total purchase price paid for the product that gives rise to the claim.

Dealers and other Installers

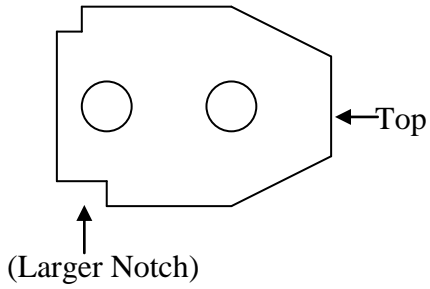
You are responsible for informing your customer and end user of the information contained above and the increased potential hazards of operating an ATV and/or RUV equipped with modified suspension components. If you install any suspension modifying components, it is your responsibility to also install the warning label prominently in view of the driver and in prominent view of the driver and passenger on RUVs and multi-passenger ATVs. They should also be instructed to notify anyone operating the vehicle, as well as any passengers, that said vehicle is modified.

As discussed above, it is critically important that they be instructed in the need for slower speed operation, regardless of terrain, after this lift kit is installed.

Parts List

Brackets

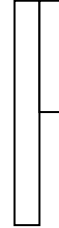
“A” Qty- 2



“B” Qty- 1



“C” Qty- 1



“D” Qty- 1

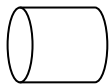


“E” Qty- 2



Spacers

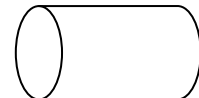
“F” Qty- 2



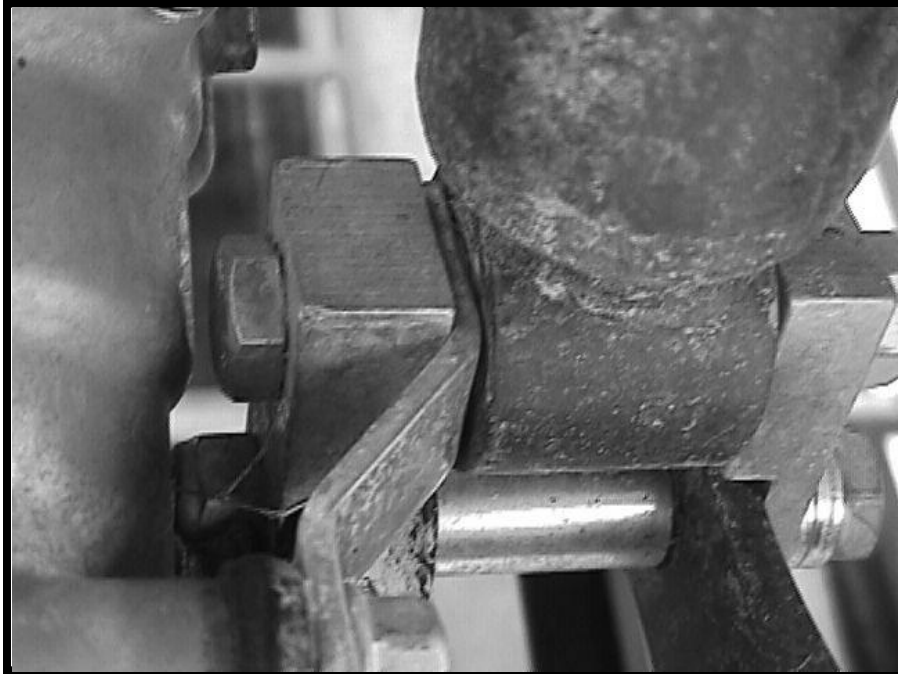
“G”: Qty-2



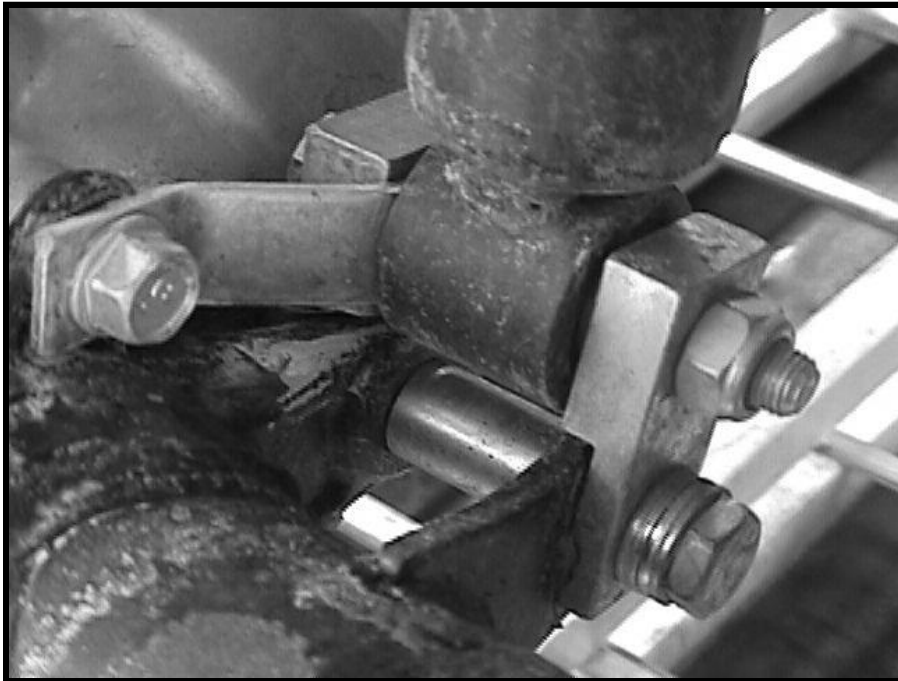
“H”: Qty-1



Rear Mounting Picture (Left Angle)



Rear Mounting Picture (Right Angle)



Front Installation (Rear View)



Front Installation (Front View)



This lift kit contains the following parts:

Lift Kit Brackets	7
Lift Kit (Spacers)	5
10mm x 55mm Bolt	4
10mm Nut	4
10mm Washer	8
10mm x 80mm Bolt	2
10mm Nut x 1.25 pitch	2
6mm x 16mm Flange Bolt	2

Front Lift

- 1) Chock rear wheels and set parking brake.
- 2) Loosen front wheel lug nuts.
- 3) Place jack under center of ATV front-end and lift until front wheels clear the ground. Be careful to support ATV properly so that it is securely supported but so that A-arms and shocks can droop to full extension.
- 4) Remove front wheels and remove bottom shock bolts. Loosen top shock bolt.
- 5) With the diagonal cut corners being the top of the bracket "A", slide the bottom of the lift bracket over the A-arm shock mount with the larger notch on the other end of bracket "A" facing toward the outside and the front tire. Place one spacer "F" between the bottom holes of the bracket and shock mounts and insert new **10mmx55mm bolt** through the spacer and secure with **10mm lock nut**

NOTE:

The front brackets can also be installed with the large notch to the inside and the bracket standing essentially in a diagonal angle on the same line as the shock. The reason for this 2nd alternative is that some wheels or tires may touch the bracket if it is installed, standing straight up. Either one is fine. The diagonal installation gives a little more lift but puts a little more downward load on the CV joints. We recommend the vertical bracket installation unless there is a wheel clearance problem with it.

- 6) Slide the bottom shock eyelet into the top of the lift bracket. Place the spacer "G" between the shock mount and the shock eyelet with the spacer on the side closest to the front. Insert a new **10mmx55mm bolt** through top bracket hole, spacer "G", and shock eyelet. Bracket "E" is installed on the top bolt on the rear side of shock mount bracket "A" and is attached to the brake line retainer with the **6mm bolt** supplied. Spacer "G" should go between the front of the shock eyelet and the inside of bracket "A".
- 7) Tighten shock bolts to manufacturer's torque specifications (33 lb/ft).
- 8) Repeat the procedure for the other side.
- 9) Install the wheels, torque wheel lug nuts to manufacturer's specifications (47 lb/ft), lower and remove jack. Check for clearance problems or misalignment.

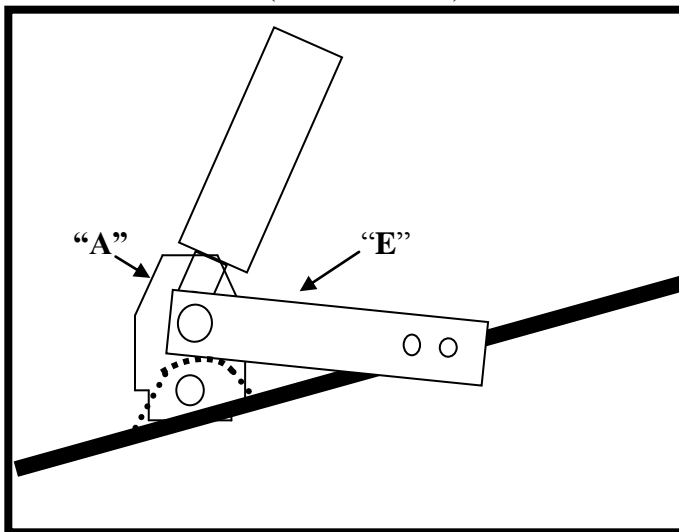
Rear Lift

- 1) Chock front wheels and set parking brake.
- 2) Loosen lug nuts on rear wheels.
- 3) Place jack under ATV at the rear of the bottom skid plate (at the back of the engine **not under the differential**) and lift until weight is off of the suspension. Be careful to secure the ATV properly so it will not fall off of the jack.
- 4) Remove rear wheels.
- 5) Place jack stand under the rear differential, so that it barely touches.
- 6) Loosen the top shock bolt.
- 7) Remove the bottom shock bolt.
- 8) Swing the bottom of the shock clear of the shock mount and differential and assemble the lift bracket assembly loosely in the following order:
 - a. Place bracket "B", and then bracket "D" on a 10mmx80mm bolt.
 - b. Insert the bolt from left (differential side) through shock eyelet then add bracket "C", and lock nut. Note that thick part of bracket "B" and "C" goes on top and thicker part faces in toward shock eyelet.
- 9) Carefully adjust jack height until bottom of lift assembly is lined up with bolthole of Honda shock mount bracket.
- 10) Place 4 flat washers on a 10mmx80mm bolt and install from right to left with a spacer "H" in the middle of the bracket.
- 11) Install 10mm locknut on the bolt.
- 12) Torque to approximately 35 lb/ft.
- 13) Install wheels and torque lugs to manufacturer's specifications (45 lb/ft). Remove jack and check for any misalignments and clearance problems.

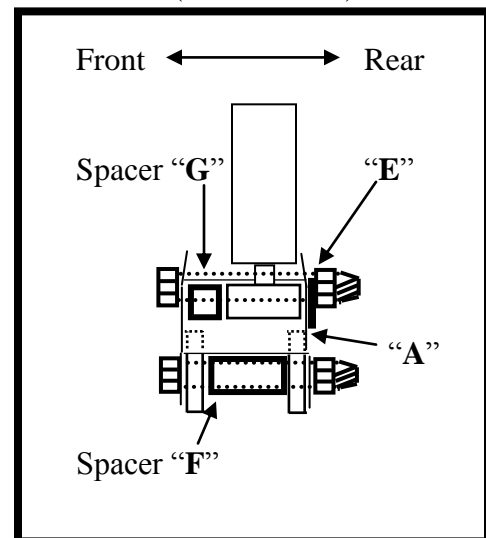
Front Mounting Diagram

FRONT INSTALLATION DIAGRAM

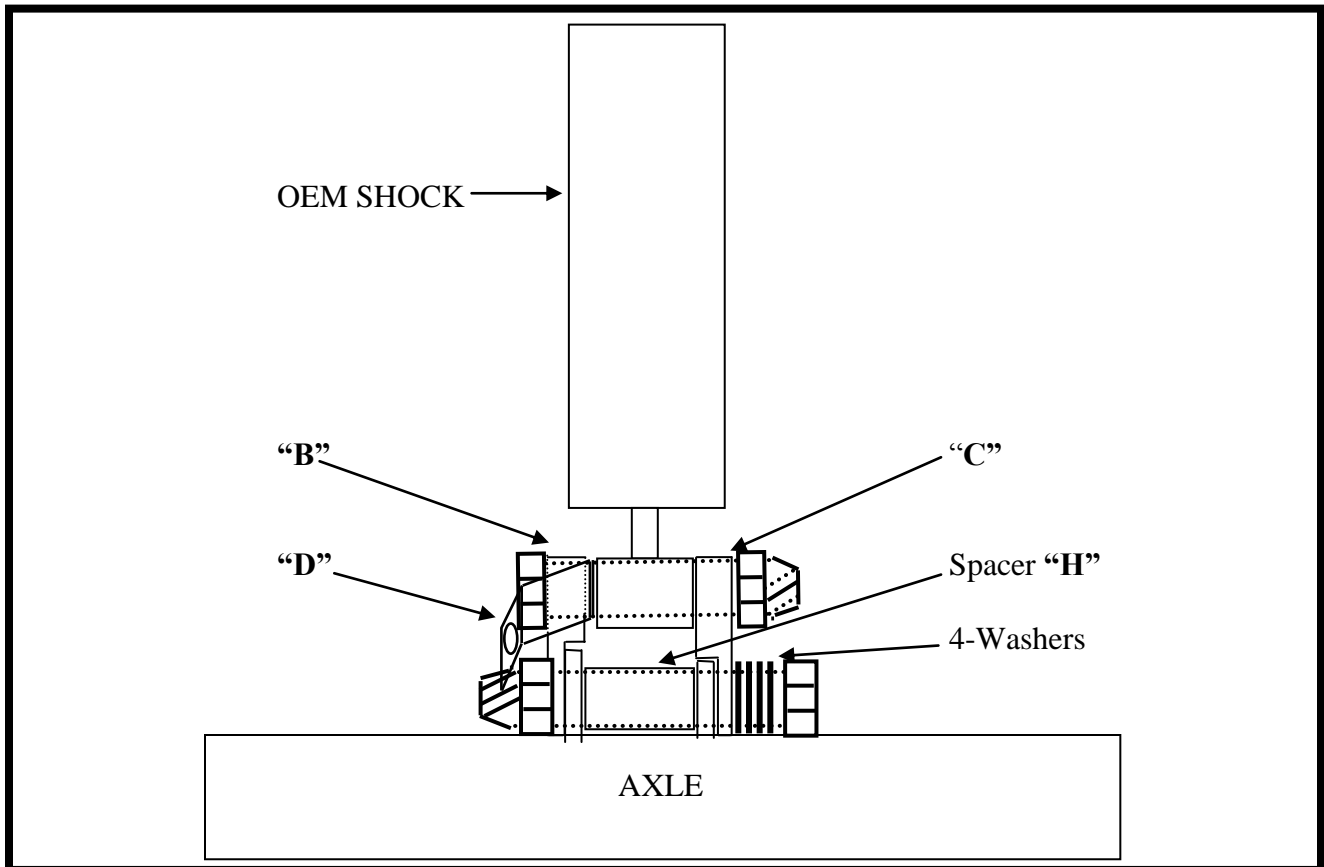
(REAR VIEW)



(SIDE VIEW)



Rear Mounting Diagram
REAR INSTALLATION DIAGRAM (REAR VIEW)



Thank You
For Choosing





High Lifter Lifetime Warranty

From the beginning, High Lifter has engineered and manufactured some of the toughest, most durable products on the market. That's why this product comes with a Lifetime Warranty. It's our promise that High Lifter will never let you down.

- The **Lifetime Warranty** covers products sold to the original purchaser only and is not transferable. The term of the warranty is for the lifetime of the vehicle in question.
- Normal wear and tear items and finishes, such as, but not limited to: Heim joints, tie rod ends, ball joints, bearings, seals, bushings, bushing sleeves, zinc plating , powder coating, or chipping and discoloration of any finish is not covered.
- High Lifter will ship the replacement product after the returned product has been inspected by High Lifter staff.
- The warranty shall not include claims for damages, installation time or labor charges, economic losses, inconvenience, transportation, towing, down time, direct or indirect or consequential damages or delay resulting from any defect.
- The warranty does not apply to products that have been improperly applied or improperly installed.

Making a warranty claim

1. All claims must be accompanied by the part and the original sales receipt or other acceptable proof of purchase from the original owner.
2. All warranties must be accompanied with a Return Merchandise Authorization (RMA) number. (Contact High Lifter at 318-524-2270 or 800-699-0947 for an RMA number)
3. When shipping the damaged product:
 - a. Write the RMA number on the outside of the box.
 - b. Also include the RMA number, proof of purchase and any notes inside the box.
 - c. Please keep your tracking number and shipment information.
4. The customer is responsible for shipping the product to High Lifter--return shipping within the lower 48 states will be paid by High Lifter products. With all warranty claims, only standard shipping services apply.
5. High Lifter will process your order within 24 business hours of receiving the returned item.
6. **Ship to:** High Lifter Products, 780 Professional Drive North, Shreveport, Louisiana 71105