

HIGHLIFTER

780 Professional Drive N. Shreveport, LA 71105 Phone (318)-524-2270 Fax (318)-524-2297

Thank you for purchasing a High Lifter Lift Kit



Please check out our other product lines:

- ▶ ***Big Lifts***
 - ▶ ***Control Arms***
 - ▶ ***Trailing Arms***
 - ▶ ***Snorkels***
 - ▶ ***Radiator Relocation Kits***
- and many more...***

Follow Us:

-  ***@ HighLifterATV***
-  ***@highlifter***
-  ***@HighLifter***
-  ***@highlifterinc***

HIGHLIFTER.com

Need Help? Contact Us

Mon-Fri 8am - 5pm CST

- ▶ ***sales@highlifter.com***
- ▶ ***800-699-0947***

Read before Installation

This product is designed for use on ATVs and/or RUVs to increase ground clearance and fender clearance. Purchasers should be aware that use of this product may increase the frequency of required maintenance, part wear, and will raise the center of gravity on your ATV and/or RUV, increasing risk of roll-over, injury and death on all types of terrain. It is your responsibility to always inform other operators and passengers of this vehicle about the added risks.

High Lifter Products, products are designed to best fit user's ATV/RUV under stock conditions. Adding, modifying, or fabricating any OEM or aftermarket parts will void warranty. High Lifter Products, products could interfere with other aftermarket accessories. If the user has aftermarket products on machine, contact High Lifter Products to verify that they will work together. Adding aftermarket suspension components and/or more aggressive tires can cause breakage of other OEM driveline components such as differentials, axles or drive shafts.

We recommend that wider tires and/or wheel spacers be used to achieve a wider stance and to improve stability of the ATV and/or RUV. Riders should be advised that the handling characteristics of a taller ATV and/or RUV are different and require extra care when riding, particularly on side hills or off-camber situations. If you further raise the center of gravity by adding taller tires, heavy loads to racks or seats, or by any other means, the ATV and/or RUV must be operated with even more care, at slower speeds and on relatively flat ground. All turns should be done at a slow speed, even on level ground.

Operation of an ATV and/or RUV with or without modified suspension components, while or shortly after consuming alcohol or drugs, subjects the rider to the risk of serious bodily harm or possible death. This risk is compounded if the rider does not wear an approved helmet and other safety gear. High Lifter urges that all approved safety gear be worn when riding an ATV and/or RUV as a driver or passenger.

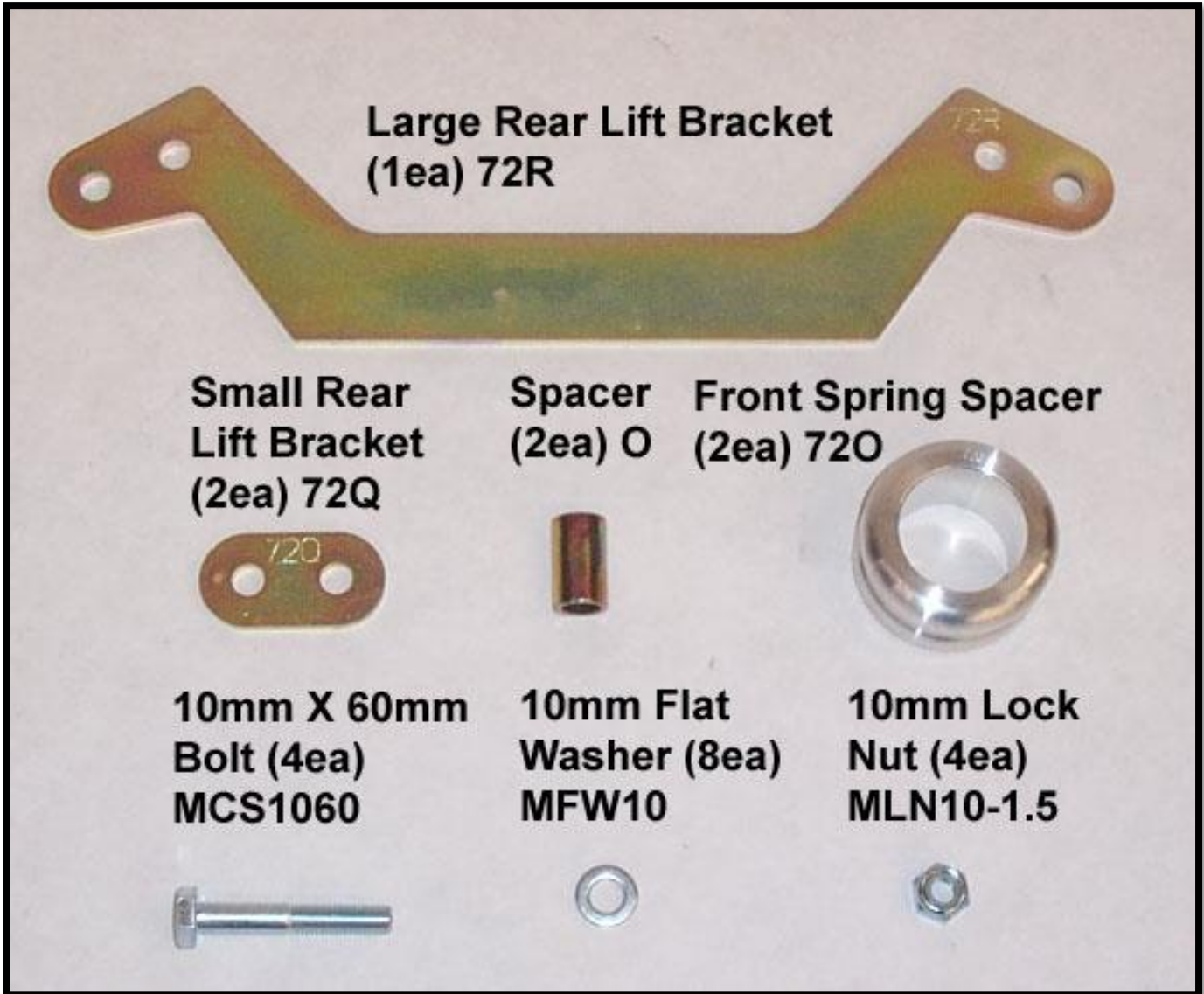
By purchasing and installing High Lifter Products, products, user agrees that should damages occur, High Lifter Products will not be held responsible for loss of time, use, labor fees, replacement parts, or freight charges. High Lifter Products will not be held responsible for any direct, indirect, incidental, special, or consequential damages that result from any product purchased from High Lifter Products. The total liability of seller to user for all damages, losses, and causes of action, shall not exceed the total purchase price paid for the product that gives rise to the claim.

Dealers and other Installers

You are responsible for informing your customer and end user of the information contained above and the increased potential hazards of operating an ATV and/or RUV equipped with modified suspension components. If you install any suspension modifying components, it is your responsibility to also install the warning label prominently in view of the driver and in prominent view of the driver and passenger on RUVs and multi-passenger ATVs. They should also be instructed to notify anyone operating the vehicle, as well as any passengers, that said vehicle is modified.

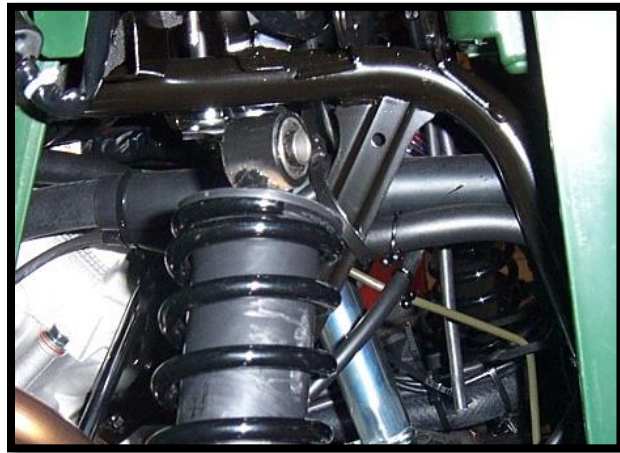
As discussed above, it is critically important that they be instructed in the need for slower speed operation, regardless of terrain, after this lift kit is installed.

Parts Diagram



Front Installation

- 1) Place ATV transmission in park. Place jack under center of ATV front end and lift until wheels clear the ground. Be careful to support ATV properly so that it is securely supported so that A-arms, trailing arms, and shocks can droop to full extension.
- 2) Remove wheels.
- 3) Disconnect and remove the shock from the ATV.



- 4) Using a spring compressor, compress the shock and remove the stock spring.



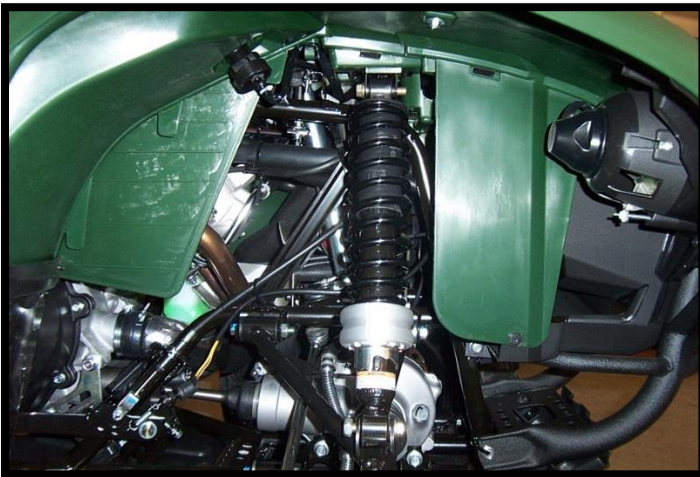
5) Next, insert the (720) spring stiffener onto the shock.



6) Place the stock spring(s) back onto the shock and secure with retaining ring.



7) Attach the shock back onto the ATV.

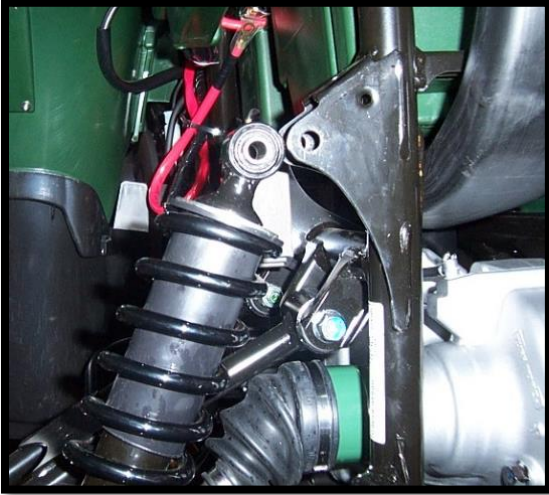


8) Repeat steps for opposite side.

9) When you have completed the installation place the wheels back on the ATV and torque lugs to factory specifications. Lower and remove jack.

Rear Lift

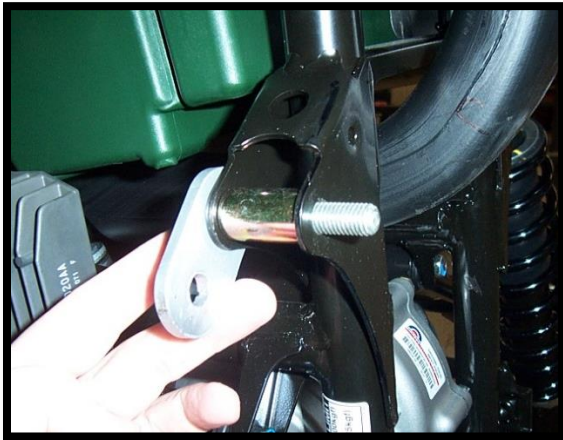
- 1) Place jack under the center of the ATV, just forward of where the rear drive shaft connects to the engine and lift until the weight is off the suspension. Be careful to secure the ATV properly so it is stable on the jack.
- 2) Remove the rear wheels.
- 3) Disconnect the top of the shocks from both sides of the ATV.



- 4) Next you need to insert the 10mm x 60mm bolt into the (72Q) small rear bracket.



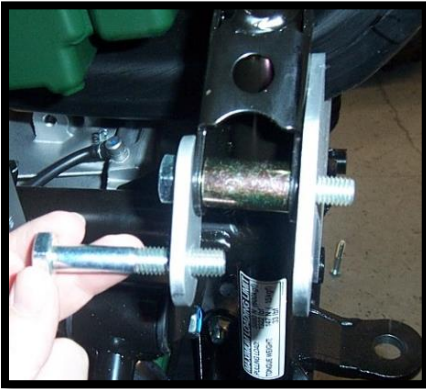
- 5) Insert the bolt into the stock shock mount from front to rear. Insert the (O) spacer between the shock mount tabs. Repeat these steps for the opposite side. This will make the installation easier.



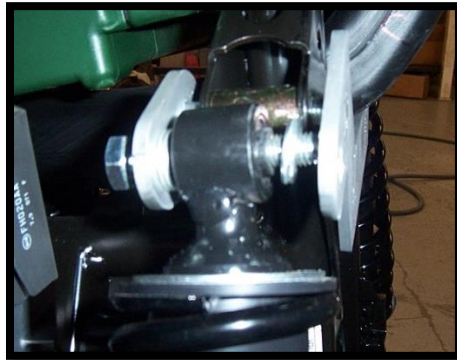
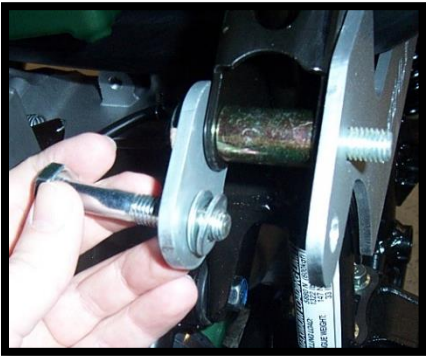
- 6) Now place the (72R) large rear lift bracket onto the bolt ends on either side.



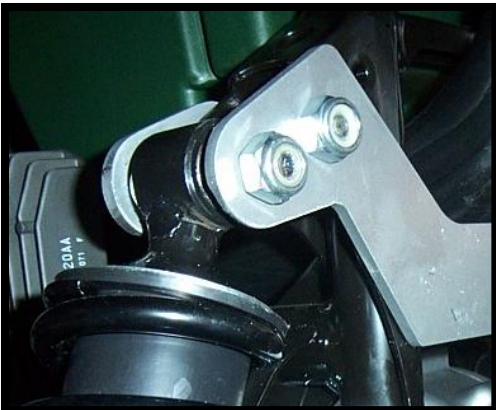
- 7) Connect the top of the shock to the lift brackets. Insert a 10mm x 60mm bolt through the brackets, front to rear.



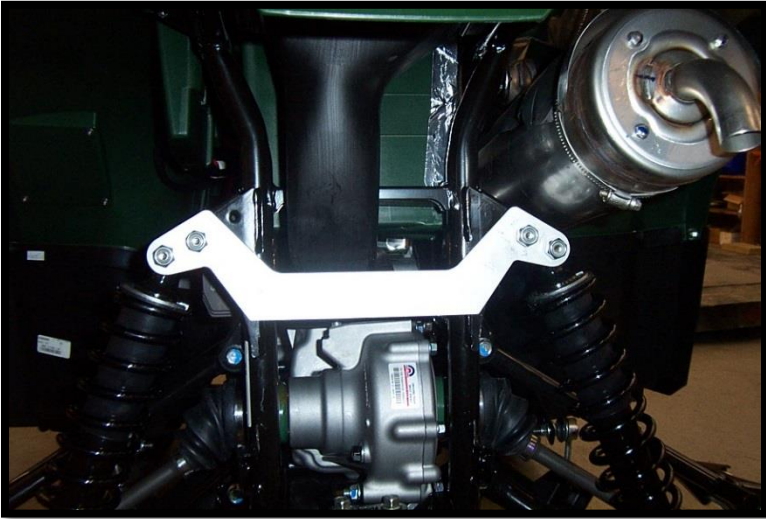
- 8) Insert two 10mm washer on either side of the shock eye, to the inside of the lift brackets.



- 9) Secure the brackets to the frame and shock using 10mm lock nuts.



10) Repeat steps for the opposite side.



11) When you have completed the installation, place the tires and wheels back on the ATV. Fasten the lug nuts to the factory specifications.

Thank You
For Choosing
HIGHLIFTER