



780 Professional Drive N. Shreveport, LA 71105 Phone (318)-524-2270 Fax (318)-524-2297

Thank you for purchasing a High Lifter Lift Kit



Please check out our other product lines:

- ▶ **Big Lifts**
- ▶ **Control Arms**
- ▶ **Trailing Arms**
- ▶ **Snorkels**
- ▶ **Radiator Relocation Kits**

and many more...



Follow Us:

-  **@ HighLifterATV**
-  **@highlifter**
-  **@HighLifter**
-  **@highlifterinc**

Need Help? Contact Us

Mon-Fri 8am - 5pm CST

- ▶ **sales@highlifter.com**
- ▶ **800-699-0947**

Read before Installation

This product is designed for use on ATVs and/or RUVs to increase ground clearance and fender clearance. It is designed for utility type, slow-speed use on relatively flat terrain in deep mud or snow. Although we have many thousands of satisfied lift kit customers and over 1,800 franchised dealers selling and installing lift kits, purchasers should be aware that use of this product may increase the frequency of required maintenance, part wear, and will raise the center of gravity on your ATV and/or RUV, increasing risk of roll-over, injury and death on all types of terrain. It is your responsibility to always inform other operators and passengers of this vehicle about the added risks.

We recommend that wider tires and/or wheel spacers be used to achieve a wider stance and to improve stability of the ATV and/or RUV. Riders should be advised that the handling characteristics of a taller ATV and/or RUV are different and require extra care when riding, particularly on side hills or off-camber situations. If you further raise the center of gravity by adding taller tires, heavy loads to racks or seats, or by any other means, the ATV and/or RUV must be operated with even more care, at slower speeds and on relatively flat ground. All turns should be done at a slow speed, even on level ground.

Operation of an ATV and/or RUV with or without a lift kit, while or shortly after consuming alcohol or drugs, subjects the rider to the risk of serious bodily harm or possible death. This risk is compounded if the rider does not wear an approved helmet and other safety gear. High Lifter urges that all approved safety gear be worn when riding an ATV and/or RUV as a driver or passenger.

Dealers and other Installers

You are responsible for informing your customer and end user of the information contained above and the increased potential hazards of operating an ATV and/or RUV equipped with a lift kit. If you install the lift kit, it is your responsibility to also install the warning label prominently in view of the driver and in prominent view of the driver and passenger on RUVs and multi-passenger ATVs. They should also be instructed to notify anyone operating the vehicle, as well as any passengers, that a lift kit is installed.

As discussed above, it is critically important that they be instructed in the need for slower speed operation, regardless of terrain, after this lift kit is installed.

Parts Diagram

Front Lift Bracket (2ea) 48V



**Spring Spacer
(2ea) 4G**



**10mm x 60mm Bolt
(5ea) MCS1060**



Rear Bracket (1ea) 4N



**10mm Lock Nut
(5ea) MLN10-1.5**



**Rear Lift Bracket
(2ea) B**



**Front
Spacer (2ea)
39C**



**Rear
Spacer
(1ea) CCC**



Front Lift

- 1) Place jack under center of ATV front end and lift until front wheels clear the ground. Be careful to support ATV properly so that it is securely supported but so that A-arms and shocks can droop to full extension.
- 2) Remove front wheels and shocks.
- 3) Remove the shocks from the UTV.



- 4) Using a spring compressor, compress the factory spring. Remove the retaining clip that secure the spring in place.



- 5) Now remove the factory spring.



6) Slide the stiffener onto the shock.



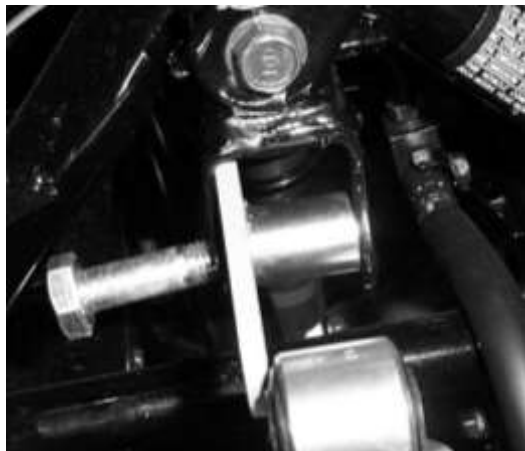
7) Place the spring back on the shock and secure it in place with the retaining clip.



8) Next insert the two lift bracket into place. The first bracket goes to the inside of the shock mount tabs and to the rear.



- 9) Now insert the spacer into the shock mount tabs and bracket. Insert the 10mm x 60mm bolt from the rear to the front to secure the bracket and spacer to the frame.



- 10) NOTE: There is a metal brake line that will need to be slightly bent to allow for the second bracket to be installed. The bracket will go between the frame and the metal brake line.



- 11) Now place the second front lift bracket into place. It will go to the front to the shock mount tabs, located on the outside. .



- 12) Repeat steps for the opposite side.
13) Reconnect the shock to the ATV. Attach the shock to the arm using the factory hardware.

14) Connect the top of the shock to the brackets using the 10mm x 60mm bolt and 10mm lock nut.



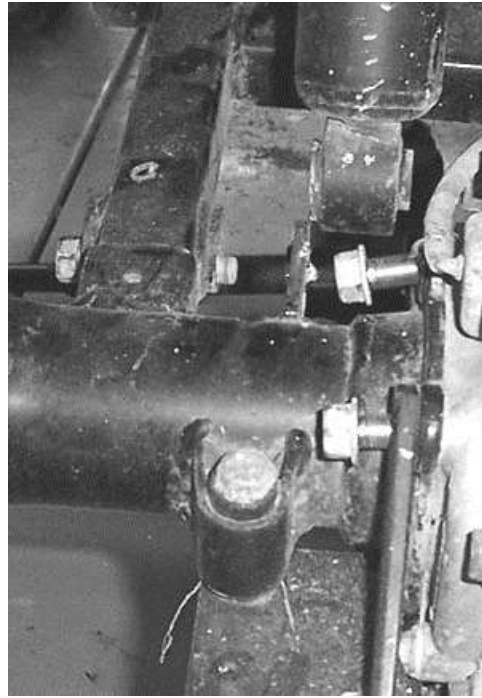
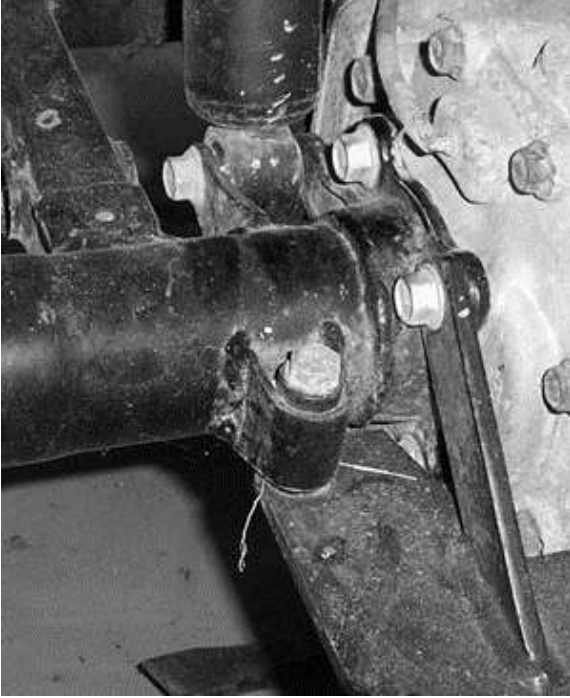
15) Repeat steps for the opposite side.

16) Make sure all bolts are tightening to manufacturer's torque specifications.

17) Install the wheels, torque wheel lug nuts to manufacturer's specifications, lower and remove jack. Check for clearance problems or misalignment.

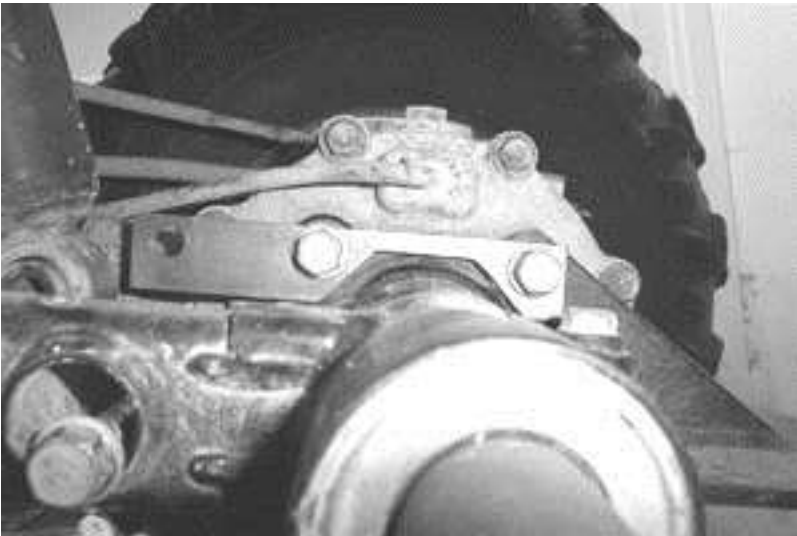
Rear Lift

- 1) Place jack under ATV at the rear of the bottom skid plate and lift until the weight is off of the suspension. Be careful to secure the ATV properly so as not to fall off the jack.
- 2) Remove the bottom of the shock and two bolts on the rear differential.

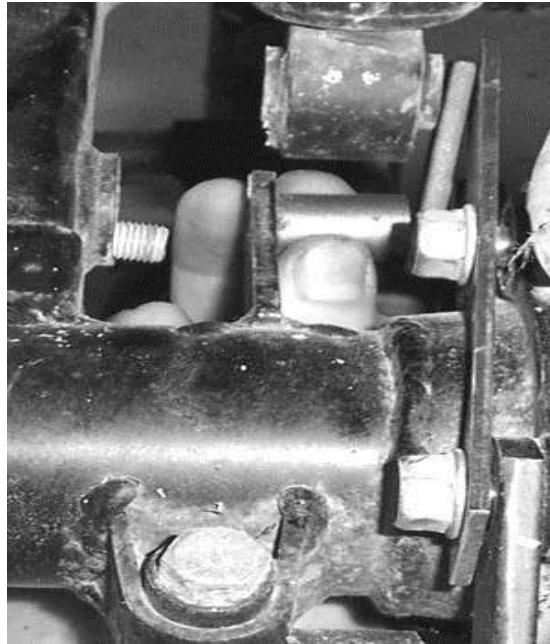


- 3) After removing the shock, jack the ATV up 1"-2" further.

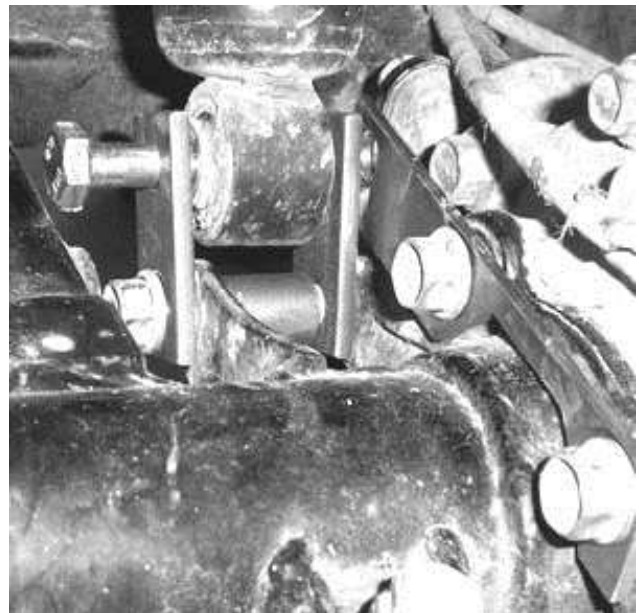
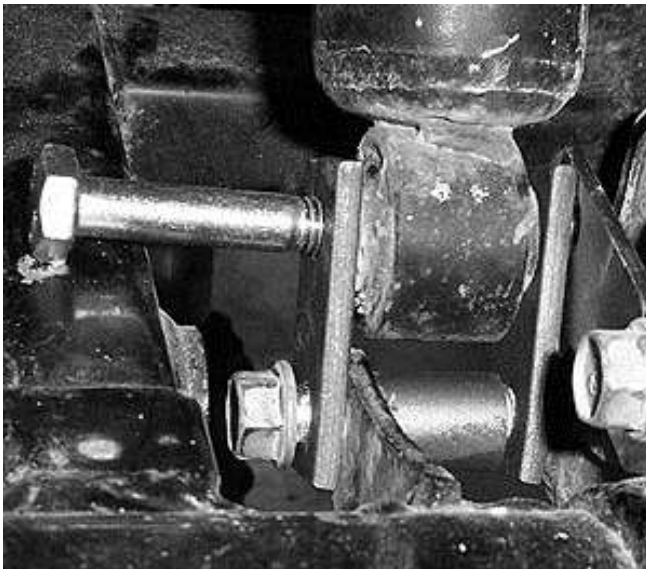
- 4) Attach the rear support bracket to the differential and secure it with the factory bolts.



- 5) Insert the two Rear Flat Brackets and the Medium Spacer on the shock mount. Placing the Flat Brackets on the outside of the shock mount tabs and the spacer in the center of the tabs. Secure it with the OEM bolt and nut.



- 6) Now attach the shock to the Flat Brackets and the differential support bracket. Using the 10x60 hex bolt and 10mm Locknut.



- 7) Tighten all bolts to manufacturer's torque specifications.
- 8) Install the wheels, torque wheel lug nuts to manufacturer's specifications, lower and remove jack. Check for clearance problems or misalignment.



High Lifter Lifetime Warranty

From the beginning, High Lifter has engineered and manufactured some of the toughest, most durable products on the market. That's why this product comes with a Lifetime Warranty. It's our promise that High Lifter will never let you down.

- The **Lifetime Warranty** covers products sold to the original purchaser only and is not transferable. The term of the warranty is for the lifetime of the vehicle in question.
- Normal wear and tear items and finishes, such as, but not limited to: Heim joints, tie rod ends, ball joints, bearings, seals, bushings, bushing sleeves, zinc plating , powder coating, or chipping and discoloration of any finish is not covered.
- High Lifter will ship the replacement product after the returned product has been inspected by High Lifter staff.
- The warranty shall not include claims for damages, installation time or labor charges, economic losses, inconvenience, transportation, towing, down time, direct or indirect or consequential damages or delay resulting from any defect.
- The warranty does not apply to products that have been improperly applied or improperly installed.

Making a warranty claim

1. All claims must be accompanied by the part and the original sales receipt or other acceptable proof of purchase from the original owner.
2. All warranties must be accompanied with a Return Merchandise Authorization (RMA) number. (Contact High Lifter at 318-524-2270 or 800-699-0947 for an RMA number)
3. When shipping the damaged product:
 - a. Write the RMA number on the outside of the box.
 - b. Also include the RMA number, proof of purchase and any notes inside the box.
 - c. Please keep your tracking number and shipment information.
4. The customer is responsible for shipping the product to High Lifter--return shipping within the lower 48 states will be paid by High Lifter products. With all warranty claims, only standard shipping services apply.
5. High Lifter will process your order within 24 business hours of receiving the returned item.
6. Ship to: High Lifter Products, 780 Professional Drive North, Shreveport, Louisiana 71105